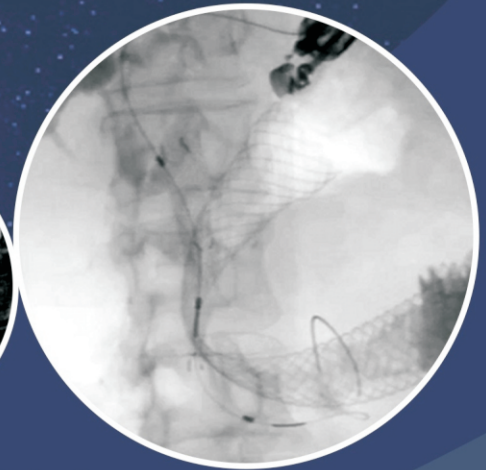
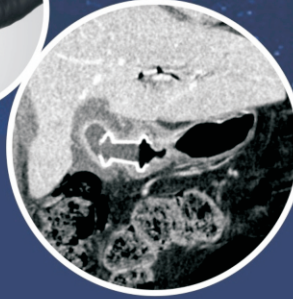
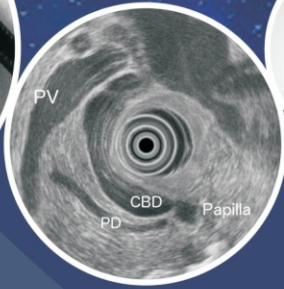
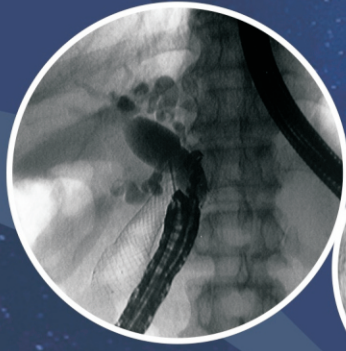


1st South China Summit & 4th Diagnostic and Therapeutic Workshop *in* Endosonography



13-14 MARCH 2014

Auditorium, 1/F Main Clinical Block and Trauma Centre
Prince of Wales Hospital, Shatin, Hong Kong

WWW.HKMISC.ORG.HK/EUS2014

COURSE DIRECTORS

Anthony Yuen Bun TEOH
Raymond Shing Yan TANG
Charing Ching Ning CHONG

INTERNATIONAL FACULTY

Lawrence HO
National University of Singapore
Singapore

Yi CUI
The First Affiliated Hospital of
Zhongshan University
China

Jiann Hwa CHEN
Taipei Tzuchi Hospital
Taiwan

Wen GUO
Nan Fang Hospital
China

Ha Xi JI
The First Affiliated Hospital of
Guangxi Medical University
China

Shan-Yu QIN
First Affiliated Hospital of
Guangxi Medical University
China

Hsiu Po WANG
National Taiwan University Hospital
Taiwan

Guo Liang XU
Sun Yat-sen University Cancer Center
China

Ai Ming YANG
Peking Union Medical College Hospital
China

CME and CNE accredited

Supported by:



Sponsors:



First Announcement & Call for Abstracts

Secretariat:

CUHK Jockey Club Minimally Invasive Surgical Skills Centre
3/F, Li Ka Shing Specialist Clinic (North Wing)
Prince of Wales Hospital, Shatin, Hong Kong
Tel: (852) 2632 3552 ▪ Fax: (852) 2632 4708
Email: eus2014@hkmisc.org.hk ▪ Website: www.hkmisc.org.hk

Organisers:

Institute of Digestive Disease
CUHK Jockey Club Minimally Invasive Surgical Skills Centre
The Chinese University of Hong Kong

